

CORNER RECORD

Agency Index CR22-082

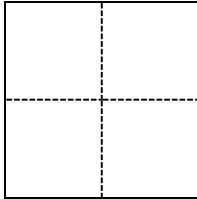
Document Number 012-282-37(ADJ)

City of City of San Rafael County of Marin, California

Brief Legal Description Concrete bridge on Southern Heights Boulevard, North of Meyer Road

CORNER TYPE

COORDINATES (Optional)



- Government Corner
- Meander
- Rancho
- Control
- Property
- Other

Date of Survey 12/20/2021

N. _____ E. _____

Elevation _____

Units Metric U.S. Survey Foot

Horizontal Datum _____

Zone _____ Epoch Date _____

Vertical Datum NAVD 88

Complies with Public Resources Code §§8801-8819

Complies with Public Resources Code §§8890-8902

PLS Act Ref.: 8765(d) 8771 8773 Other:

Corner/Monument: Left as found Established Rebuilt Pre-Construction

Found and tagged Reestablished Referenced Post-Construction

Narrative of corner identified and monument as found, set, reset, replaced, or removed:

See sheet #2 for description(s):

2 1/2" Brass disk set in southwest abutment on southwest corner of concrete bridge on Southern Heights Boulevard. Elevation determined through level loop from NGS benchmark HT1767, designated A108, located near the intersection of Fifth Avenue and D St. From HT1767, south along D Street, thence west along Meyer Road, and north along Southern Heights Boulevard to a concrete bridge. Brass disk to be used as elevation benchmark only. Elevation of new benchmark is 277.97 feet.

SURVEYOR'S STATEMENT

This Corner Record was prepared by me or under my direction in conformance with

the Professional Land Surveyors' Act on November 30, 2022.

Signed [Signature] P.L.S. or R.C.E. No. 8940



COUNTY SURVEYOR'S STATEMENT

This Corner Record was received November 30, 2022

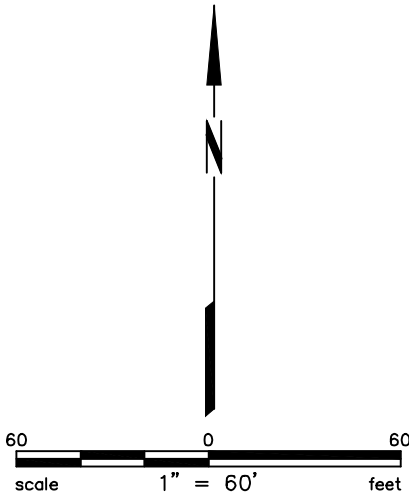
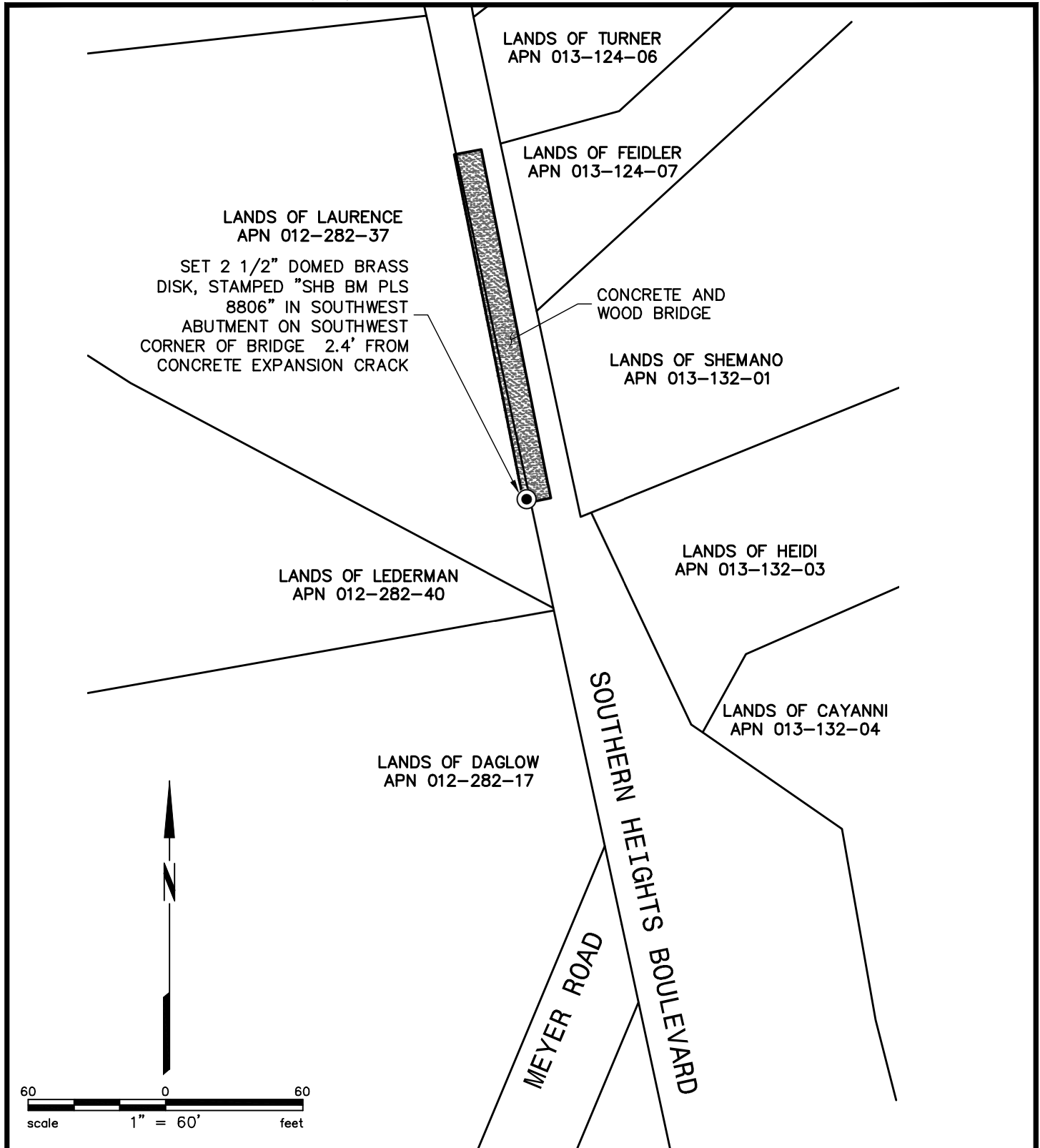
and examined and filed December 01, 2022.

Signed T.W. Park P.L.S. [Redacted] No. 8176

Title County Surveyor

County Surveyor's Comment





Plot Nov 30, 2022 at 8:00pm



980 9TH ST, STE. 2300
 SACRAMENTO, CA 95814
 PH: 916-556-5800
 FAX: 916-556-5899

ENGINEERS / SURVEYORS / PLANNERS
 20201395-60_BDHC.dwg

COPYRIGHT © 2022 BKF ENGINEERS